



ANNIVERSARY 16763A



ANNIVERSARY 16763A Model number: 31ANN16763AH19

3 beds • 2 baths • 1216 sq.ft. • 16' width • 76' depth

Our home building facilities invest in continuous product and process improvements. Plans, dimensions, features, materials, specifications and availability are subject to change without notice or obligation. Renderings and floor plans are representative likenesses of our homes and may differ from the actual homes. We invite you to tour a Home Center near you and inspect the highest value in quality housing available or call (405) 631-3200 to speak with a Home Consultant. Copyright 2017, CMH. All rights reserved.

<https://www.oakwoodokc.com>

OAKWOOD HOMES- OKLAHOMA CITY

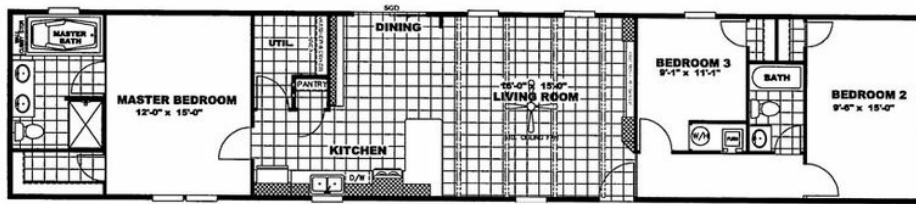
6900 SOUTH SHIELDS BLVD
OKLAHOMA CITY, OK 73149

Monday - Thursday: 9am - 7pm
Friday: 9am - 6pm
Saturday: 9am - 5pm
Sunday: Closed

(405) 631-3200



ANNIVERSARY 16763A



ANNIVERSARY 16763A Model number: 31ANN16763AH19

3 beds • 2 baths • 1216 sq.ft. • 16' width • 76' depth

Our home building facilities invest in continuous product and process improvements. Plans, dimensions, features, materials, specifications and availability are subject to change without notice or obligation. Renderings and floor plans are representative likenesses of our homes and may differ from the actual homes. We invite you to tour a Home Center near you and inspect the highest value in quality housing available or call (405) 631-3200 to speak with a Home Consultant. Copyright 2017, CMH. All rights reserved.

<https://www.oakwoodokc.com>

OAKWOOD HOMES- OKLAHOMA CITY

6900 SOUTH SHIELDS BLVD
OKLAHOMA CITY, OK 73149

Monday - Thursday: 9am - 7pm
Friday: 9am - 6pm
Saturday: 9am - 5pm
Sunday: Closed

(405) 631-3200